

Lasermachines Amada LC 3015 F1 NT, 4000 Watt

Year: 06/2011, Mach.-No. 38510390

Machine hours: about 23.000 h



Technical Data:

Working area X/Y/Z: 3270x1550x100 mm

Max. sheet weight: 920 kg

Max. positioning speed X/Y/Z: 120/120/120 m/min

Simultaneous: 169 m/min

Technology of axis X/Y/Z: linear drives

Max. acceleration: 30 m/s²

Positioning tolerance: +/- 0,01 mm

Positioning spread: +/- 0,005 mm

Machine weight: 15,1 to

Laser:

Laser source: Fanuc AF 6000 iB

Max. laser continuous power: 6.000 Watt

Max. laser peak power: 7.000 Watt

Laser gas consumption: 20 l/h

System principle: AC HF animated, quickly passed

Frequency: 5 – 2.000 Hz

Laser wave length: 10,6 µm

Beam divergency:<2 mrad

Control:

CNC type: AMNC-F

Screen: 15" touch screen

Number of controlled axis: 4 (X/Y/Z/B) and laser power control

Memory capacity: 10 MB

Standard options:

Automatic pallet changer

High pressure cutting (CleanCut)

Alumino cutting device

Automatic gas pressure control

Contact-free capacitive laser cutting head HS 2007

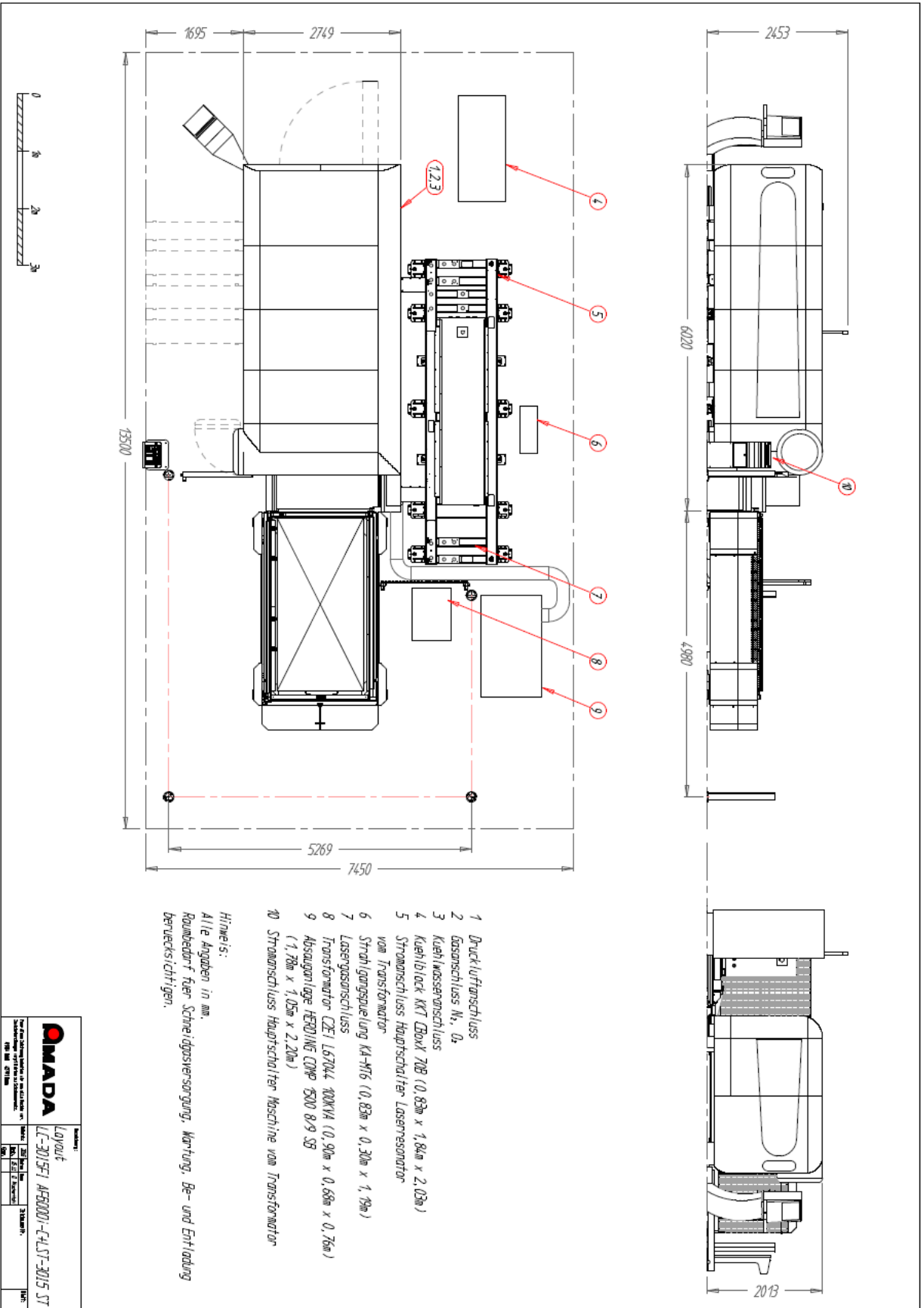
Dust collector + beam purge unit + cooling unit (combined device)

Diode laser for positioning

Active cutting monitoring

Cooling Cut





- 1 Druckluftanschluss
- 2 Gasanschluss Nr. 0₂
- 3 Kuehlwasseranschluss
- 4 Kuehlblock KIT DBox1 ZOB (0,83m x 1,84m x 2,02m)
- 5 Stromanschluss Hauptschalter-Lasersondator vom Transformator
- 6 Strahlenguelleitung KA-MTB (0,83m x 0,30m x 1,19m)
- 7 Lasergasanschluss
- 8 Transformator CZEI L67044 100KVA (0,90m x 0,68m x 0,76m)
- 9 Absauganlage HEROLINE COMP 7500 8/9 SB (1,76m x 1,05m x 2,20m)
- 10 Stromanschluss Hauptschalter Maschine vom Transformator

Hinweis:
Alle Angaben in mm.
Raumbedarf fuer Schneidgasversorgung, Wartung, Be- und Entladung
beruecksichtigen.

| | |
|---|--|
| | Modell: Layout LC-301SE1 AF50001-44LT-3015 ST |
| | Hersteller: MAZAK |
| Die Fertigungsdetails in den Zeichnungen sind nachfolgende Offerte zu entnehmen: 192 06 07106 | Maßstab: 1:1 Blatt: 1 von 1 Datum: 23.09.2017 |
| | UMF |